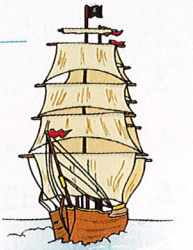


## Reading – Brave Explorers

Add phrases from the data bank.

1. \_\_\_\_\_ people living 2. \_\_\_\_\_ did not know what the rest of the world was like. Brave sailors made long **voyages** 3. \_\_\_\_\_ to discover new worlds and to draw maps of them. These voyages often took years to **complete** and many **sailors** died from accidents or disease.



Often explorers' ships ran aground 4. \_\_\_\_\_ or were broken up 5. \_\_\_\_\_. They might be **blown** off course by **violent** winds or not be able to sail anywhere because the wind had dropped **completely**. A **fierce** storm might drive the ship 6. \_\_\_\_\_ while the crew struggled for control.



Early sailors were very frightened of unknown **dangers**

7. \_\_\_\_\_. They feared **monsters**, **giants** and sea serpents. They imagined that a **sudden** whirlpool might suck their ship down 8. \_\_\_\_\_.

**Q:** Write two real problems and two imaginary problems for sailors.

Real: \_\_\_\_\_

Imaginary: \_\_\_\_\_

## Data Bank

- into the depths • on sandbanks
- Hundreds of years ago
- on sunken reefs • in tiny, frail ships • in strange lands
- in Europe • for days

## Spelling

Write six different words from this week's spelling list on page 72 then choose six interesting words in bold from this week's story that you'd like to learn to spell.

## Class Spelling


## Story Spelling


Spelling Activity: Circle the misspelt words from the story and the list and rewrite them correctly.

**vilent** **monstars** **complete** **giants** **absence** **beginer** **giuide** **electricity**

## English

Write articles 'a' or 'an' for these words.  
(Words beginning with a vowel are preceded by "an".)

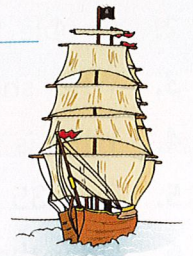
1. \_\_\_\_\_ apple    4. \_\_\_\_\_ tent    7. \_\_\_\_\_ fun-park    10. \_\_\_\_\_ surprise  
 2. \_\_\_\_\_ egg    5. \_\_\_\_\_ world    8. \_\_\_\_\_ giraffe    11. \_\_\_\_\_ elephant  
 3. \_\_\_\_\_ printer    6. \_\_\_\_\_ insect    9. \_\_\_\_\_ highway    12. \_\_\_\_\_ sentence



## Reading – Brave Explorers

Add phrases from the data bank.

1. \_\_\_\_\_ people living 2. \_\_\_\_\_ did not know what the rest of the world was like. Brave sailors made long **voyages** 3. \_\_\_\_\_ to discover new worlds and to draw maps of them. These voyages often took years to **complete** and many **sailors** died from accidents or disease.



Often explorers' ships ran aground 4. \_\_\_\_\_ or were broken up 5. \_\_\_\_\_. They might be **blown** off course by **violent** winds or not be able to sail anywhere because the wind had dropped **completely**. A **fierce** storm might drive the ship 6. \_\_\_\_\_ while the crew struggled for control.



Early sailors were very frightened of unknown **dangers**

7. \_\_\_\_\_. They feared **monsters**, **giants** and sea serpents. They imagined that a **sudden** whirlpool might suck their ship down 8. \_\_\_\_\_.

**Q:** Write two real problems and two imaginary problems for sailors.

Real: \_\_\_\_\_

Imaginary: \_\_\_\_\_

## Data Bank

- into the depths • on sandbanks
- Hundreds of years ago
- on sunken reefs • in tiny, frail ships • in strange lands
- in Europe • for days

## Spelling

Write six different words from this week's spelling list on page 72 then choose six interesting words in bold from this week's story that you'd like to learn to spell.

## Class Spelling


## Story Spelling


Spelling Activity: Circle the misspelt words from the story and the list and rewrite them correctly.

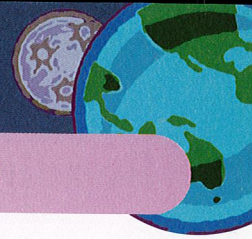
**vilent   monstars   complete   giants   absence   beginner   giuide   electricity**

## English

Write articles 'a' or 'an' for these words.  
(Words beginning with a vowel are preceded by 'an'.)

- |                  |                 |                   |                    |
|------------------|-----------------|-------------------|--------------------|
| 1. _____ apple   | 4. _____ tent   | 7. _____ fun-park | 10. _____ surprise |
| 2. _____ egg     | 5. _____ world  | 8. _____ giraffe  | 11. _____ elephant |
| 3. _____ printer | 6. _____ insect | 9. _____ highway  | 12. _____ sentence |



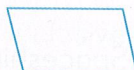


## Maths – Knowledge/Skills

- Days in March? \_\_\_\_\_
- Write the factors of 16: \_\_\_\_\_
- Name these shapes:



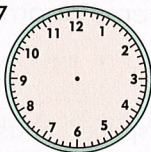
a) \_\_\_\_\_



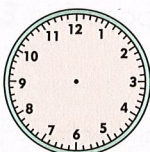
b) \_\_\_\_\_

- Add these capacities:  
3L 120 mL + 2L 630 mL = \_\_\_\_\_
- $231 - 4 =$  \_\_\_\_\_
- $6L - 4L$  500 mL = \_\_\_\_\_
- What shape is the base of a cone?  
\_\_\_\_\_
- Share \$28 amongst 4 people.  
How much each? \_\_\_\_\_
- Put these times on the clock faces:

a) 12:27



b) 3:48



- 48 months = \_\_\_\_\_ years

## Numeration

Complete these patterns:

- 3 6 12 \_\_\_\_\_ 48 \_\_\_\_\_
- 640 320 160 \_\_\_\_\_ 40 \_\_\_\_\_ 5
- $2\frac{1}{2}$  5  $7\frac{1}{2}$  \_\_\_\_\_  $12\frac{1}{2}$  \_\_\_\_\_ 20
- A4 B8 C12 \_\_\_\_\_ H32

Write these numbers in numerals:

- Eleven thousand, four hundred and twenty-two \_\_\_\_\_
- Thirty-one thousand, three hundred and fifty-eight \_\_\_\_\_
- Forty-three thousand and one \_\_\_\_\_
- Twenty-two thousand, nine hundred and ninety-five \_\_\_\_\_

Identify the place value in bold in these numbers:

- 34 579 \_\_\_\_\_
- 56 792 \_\_\_\_\_
- 47 901 \_\_\_\_\_
- 21 390 \_\_\_\_\_

## Number

- |                              |                            |                         |                                    |
|------------------------------|----------------------------|-------------------------|------------------------------------|
| 1. 2,479<br>+ 4,696<br>_____ | 2. 1,837<br>- 477<br>_____ | 3. 12.5<br>x 7<br>_____ | 4. 12.5<br>67.4<br>+ 58.8<br>_____ |
|------------------------------|----------------------------|-------------------------|------------------------------------|

## Research – Community

Match the community facilities in the data bank with the basic areas of needs listed below.

- Base Hospital • Telstra • Charlestown Buses • Fixem Medical Centre
- Jo's Suits • The Sports Centre • Guard Security • Bob's Bikes
- Police Station • Charlestown Square • Civic Theatre • Digital Phones

- |   |   |
|---|---|
| 1. Protection and Security<br>(i) _____ (ii) _____      | 4. Retailing<br>(i) _____ (ii) _____          |
| 2. Communication<br>(i) _____ (ii) _____                | 5. Transport<br>(i) _____ (ii) _____          |
| 3. Entertainment and Recreation<br>(i) _____ (ii) _____ | 6. Medical Facilities<br>(i) _____ (ii) _____ |

If you lived in these communities, what would be your basic need? Refer to the Data Bank.

- An oasis town in Egypt \_\_\_\_\_
- A rainforest settlement \_\_\_\_\_
- A village in Vietnam \_\_\_\_\_
- A large city \_\_\_\_\_
- A research base in the Antarctic \_\_\_\_\_

### Data Bank

- carrying of fresh water • rainfall to help grow rice
- a means of shelter
- regular supply of services • warmth